

# Crossed roller slewing bearings without gear

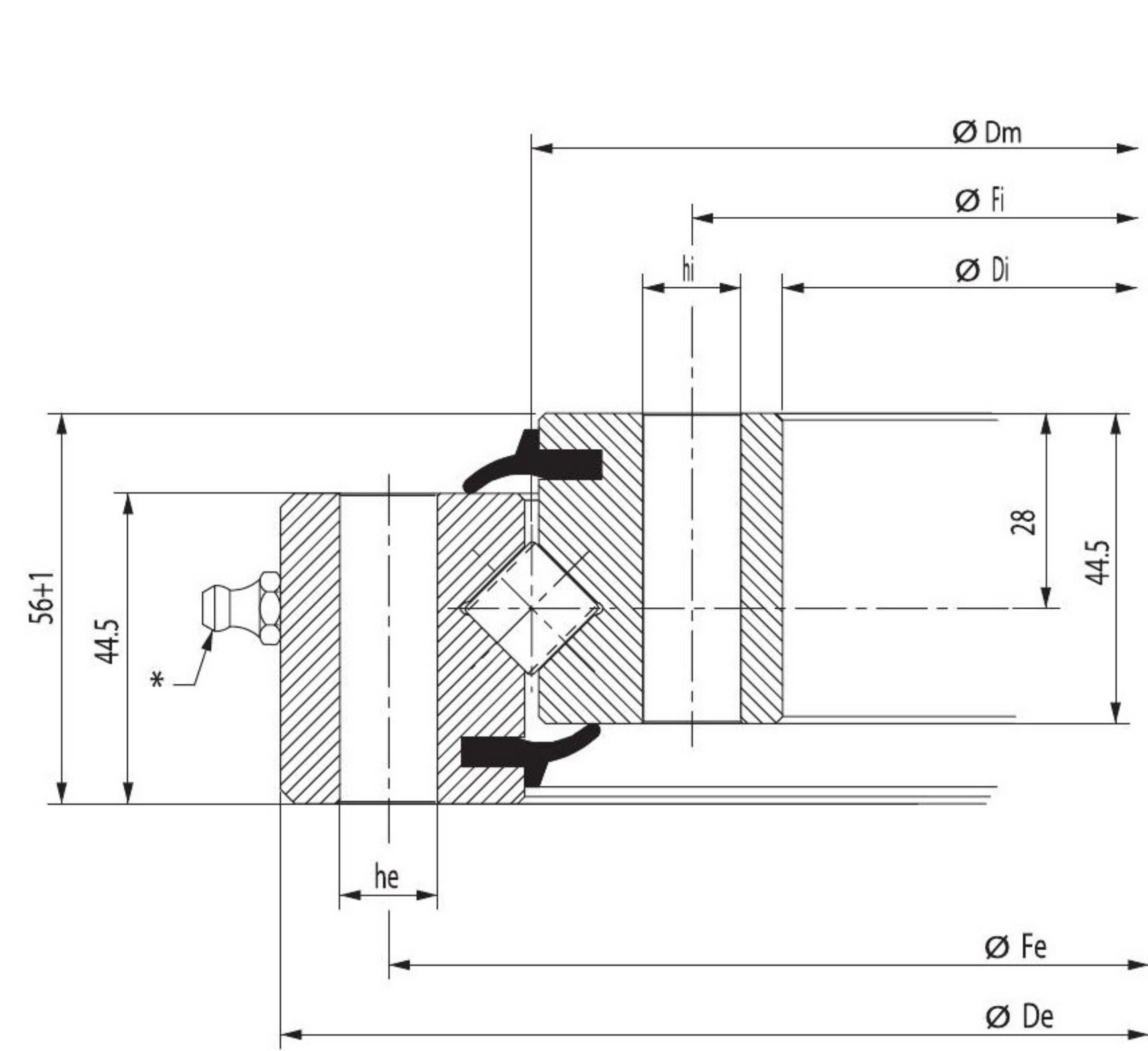


Figure K

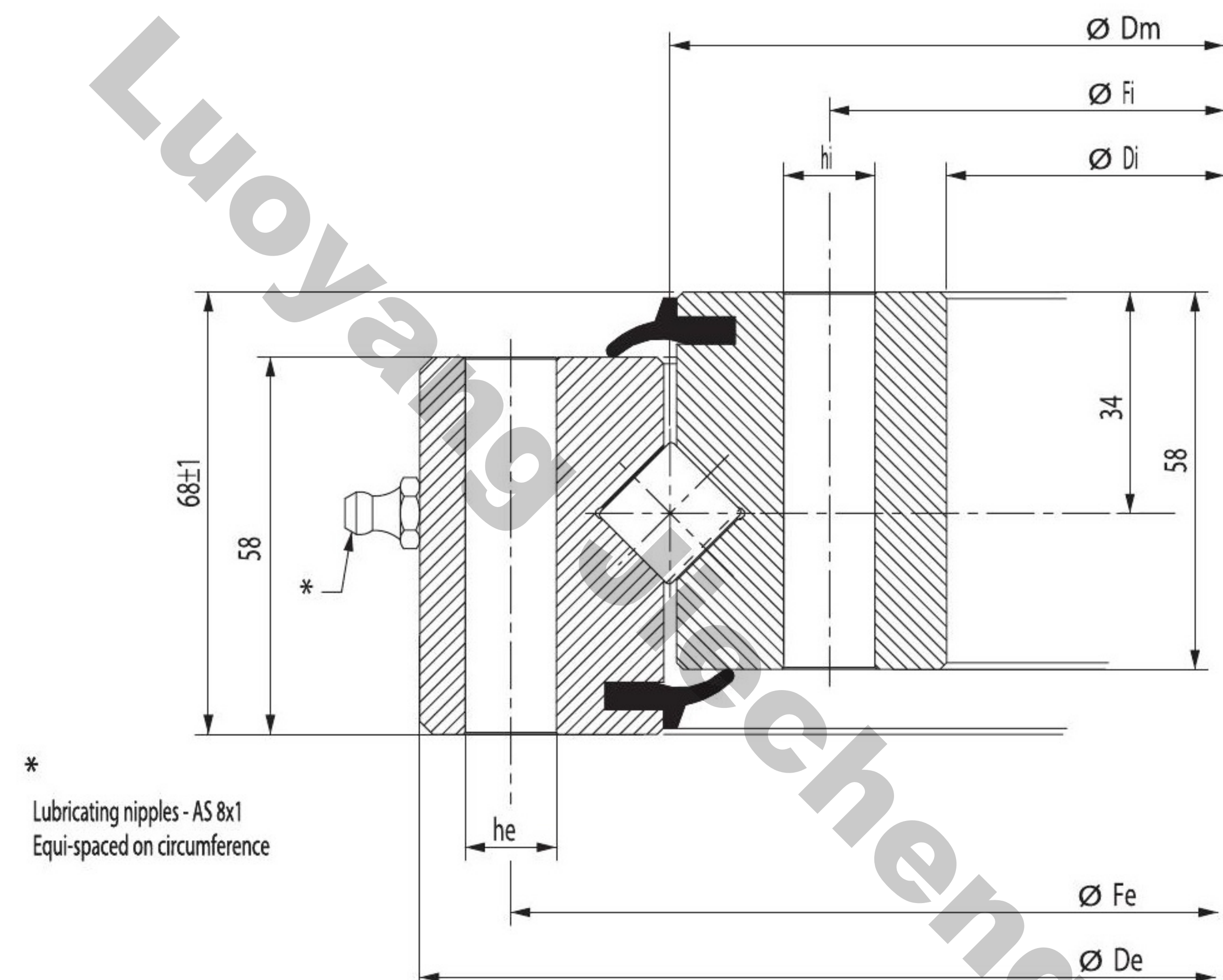
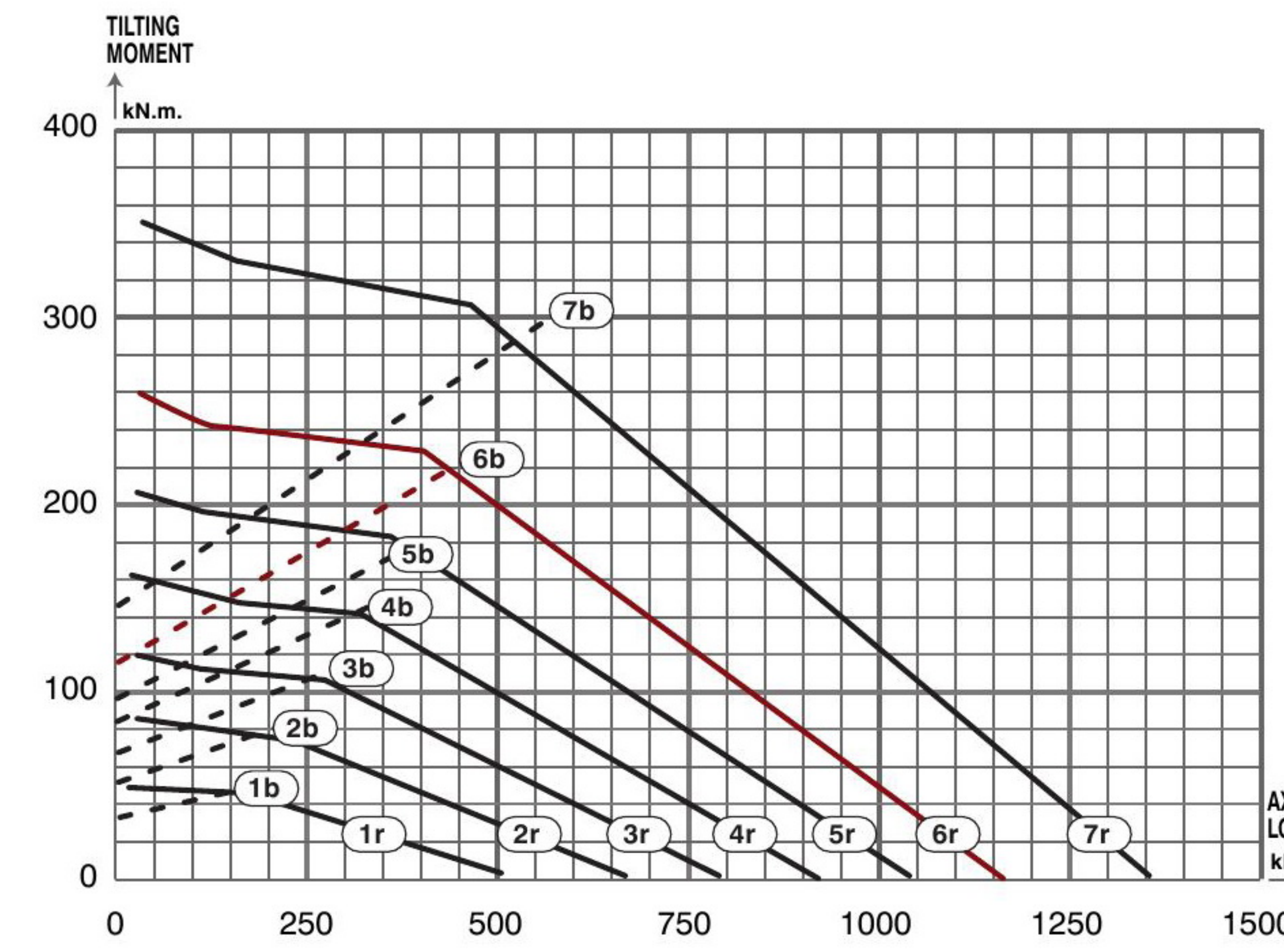
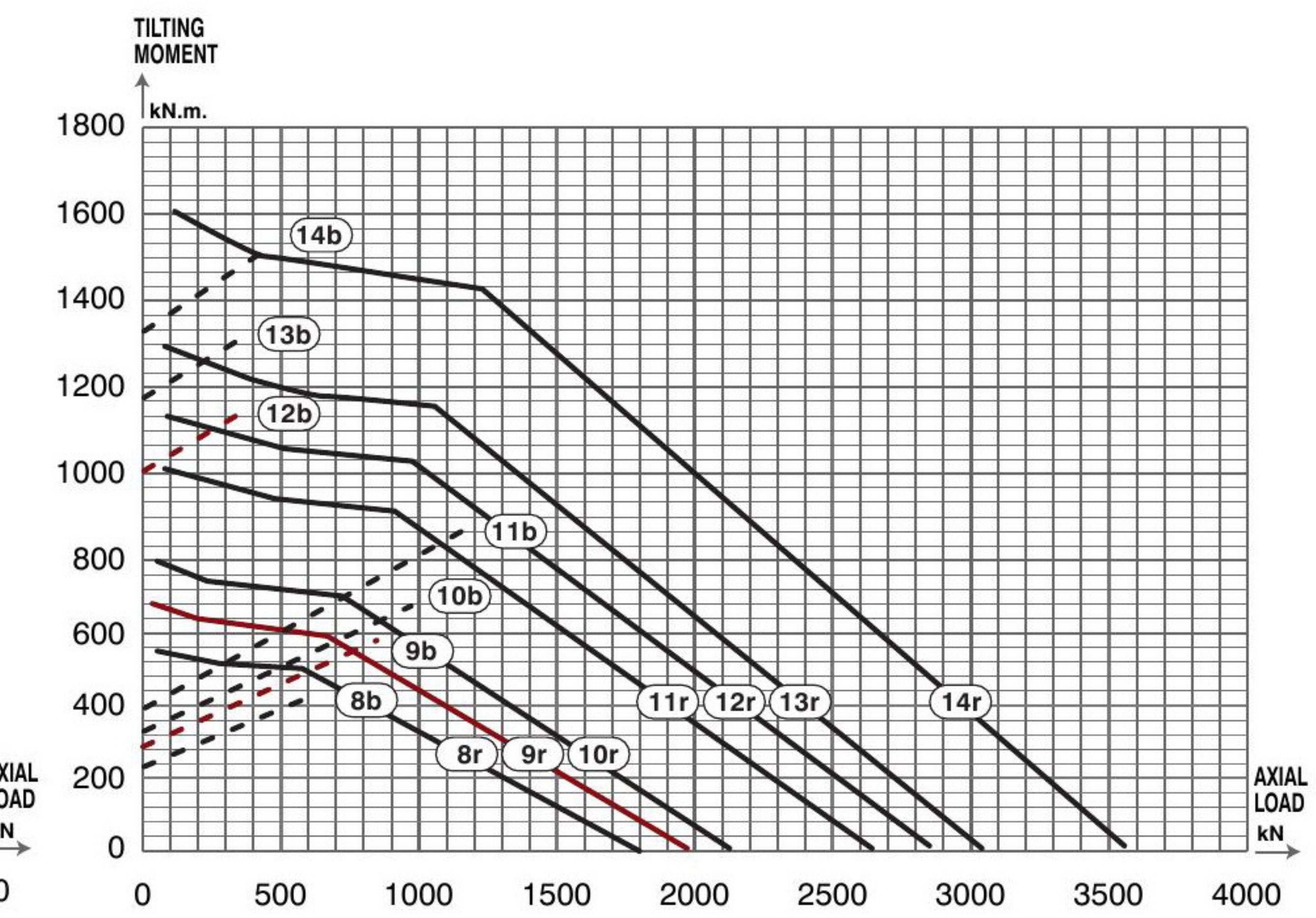


Figure L

Static limiting load curves for raceway ——— 1r to 14r  
 Static limiting load curves for bolting - - - - - 1b to 14b



Dm 414 to 1094 mm



Dm 1204 to 1904 mm

\* Item number of the relevant curve in the static limiting load graph for raceway and bolting

Main dimensions		Fixing holes							Mass	Basic load rating		curves*		Designation	
De	Dm	Di	Fe	he	Ne	Fi	hi	Ni		axial dyn. C	axial stat. Co	Fig N°	raceways (r)		bolt (b)
mm	mm	mm	mm	mm		mm	mm		kg	kN	kN				
484	414	344	460	14	24	368	14	24	28	K	229	520	1r	1b	RKS.160.14.0414
614	544	474	590	14	32	498	14	32	38	K	270	680	2r	2b	RKS.160.14.0544
714	644	574	690	14	36	598	14	36	44	K	290	800	3r	3b	RKS.160.14.0644
814	744	674	790	14	40	698	14	40	52	K	315	930	4r	4b	RKS.160.14.0744
914	844	774	890	14	40	798	14	40	60	K	340	1050	5r	5b	RKS.160.14.0844
1014	944	874	990	14	44	898	14	44	67	K	360	1170	6r	6b	RKS.160.14.0944
1164	1094	1024	1140	14	48	1048	14	48	77	K	390	1360	7r	7b	RKS.160.14.1094
1289	1204	1119	1257	16	45	1151	16	45	124	L	386	1836	8r	8b	RKS.160.16.1204
1399	1314	1229	1367	16	50	1261	16	50	135	L	419	1995	9r	9b	RKS.160.16.1314
1509	1424	1339	1477	16	54	1371	16	54	146	L	494	2352	10r	10b	RKS.160.16.1424
1619	1534	1449	1587	16	60	1481	16	60	158	L	611	2912	11r	11b	RKS.160.16.1534
1752	1644	1536	1708	22	54	1580	22	54	214	L	658	3133	12r	12b	RKS.160.16.1644
1862	1754	1646	1818	22	60	1690	22	60	228	L	1049	3354	13r	13b	RKS.160.16.1754
2012	1904	1796	1968	22	64	1840	22	64	248	L	854	4066	14r	14b	RKS.160.20.1904

Gear not hardened  
 Bearings delivered without centering  
 Bearings are not delivered full of grease and consequently must be fully relubricated with SKF LGEP2 or equivalent before the machine is running.  
 Material : C 45E => curves N° 1 to 7 - 42 Cr Mo4 => curves N° 8 to 14